

QUILT 52" x 65"

True Luck

BY STEPHANIE RYAN

moda

SUPPLIES

Assorted turquoise and lavender fabrics from True Luck Collection.

See fabric requirement page.

CUTTING

Out of assorted turquoise and lavender prints, cut 8 strips 5 1/2" WOF

Sub-cut strips into fifty-four (54) 5 1/2" squares (A)

Out of Grey print cut 9 strips 2 1/2" WOF

Subcut strips into sixty (60) 2 1/2" x 5 1/2" rectangles (B)

Out of Turquoise fabric cut 4 strips 3 1/2" WOF

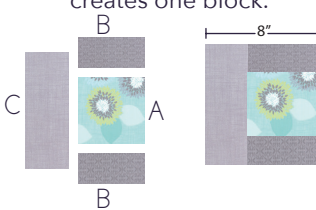
Subcut strips into twenty-eight (28) 3 1/2" x 5 1/2" rectangles (D)

Out of light grey fabric cut 7 strips 3 1/2" WOF

Subcut strips into thirty-five (35) 3 1/2" x 9 1/2" rectangles (C)

ROW ONE

Sew piece B onto opposite sides of piece A. Sew piece C onto left side of piece A, B unit. Press seam allowance toward piece C. This creates one block.



Make 6 blocks and sew together to form Row 1. To complete row sew one rectangle C to end of row. Make 5 rows.



ROW TWO

Sew rectangle piece D to piece A. Press seam allowance toward piece D. This forms one block.



Sew 6 blocks together to form Row 2. To complete row, sew one rectangle D to end of row. Make 4 rows.



CONNECTING THE ROWS

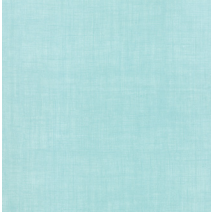
Sew Rows together alternately with Row 1 on top and bottom making sure to match seams.

{Stephanie Ryan}

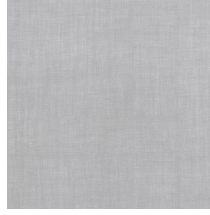
www.StephanieRyan.com

True Luck

FABRIC REQUIREMENTS



7177-25
28 pieces-1/2yd



7177-26
35 pieces-1yd



7200-11
11 pieces-3/8yd



7200-14
10 pieces-3/8yd



7201-11
9 pieces-3/8yd



7201-14
4 pieces-1/4yd



7204-11
5 pieces-1/4yd



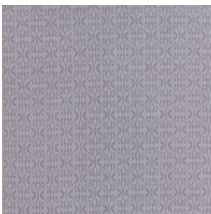
7204-14
4 pieces-1/4yd



7205-11
5 pieces-1/4yd



7205-14
6 pieces-1/4yd



7202-12
60 pieces-1yd



7203-15
Binding-3/4yd